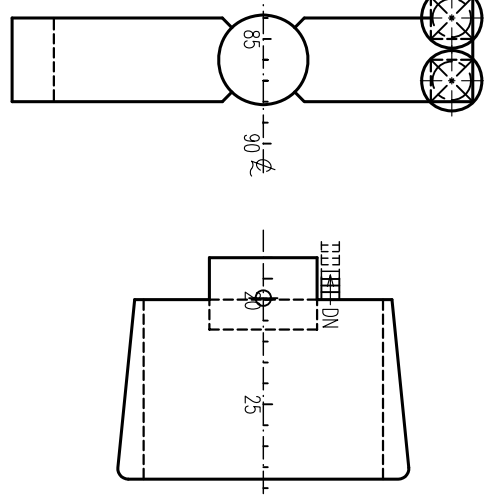
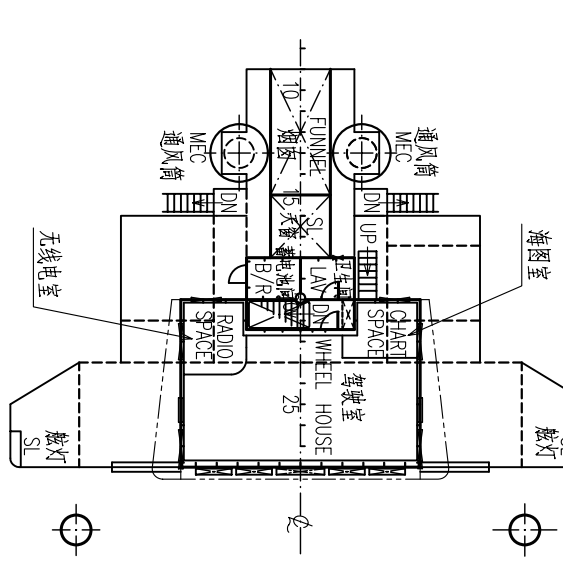


吊机室顶板
CRAN HOUSE TOP

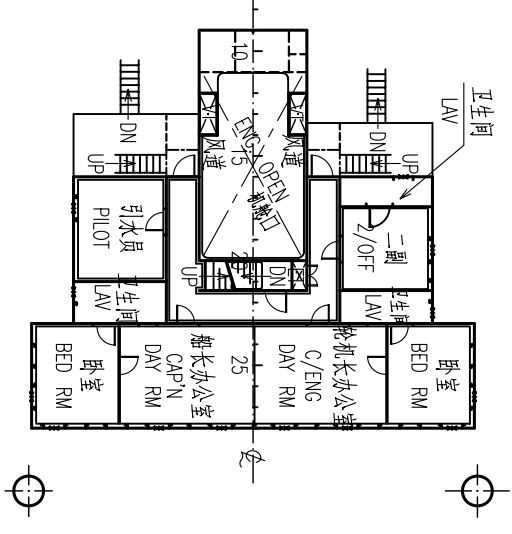
驾驶室甲板
COMP. DECK



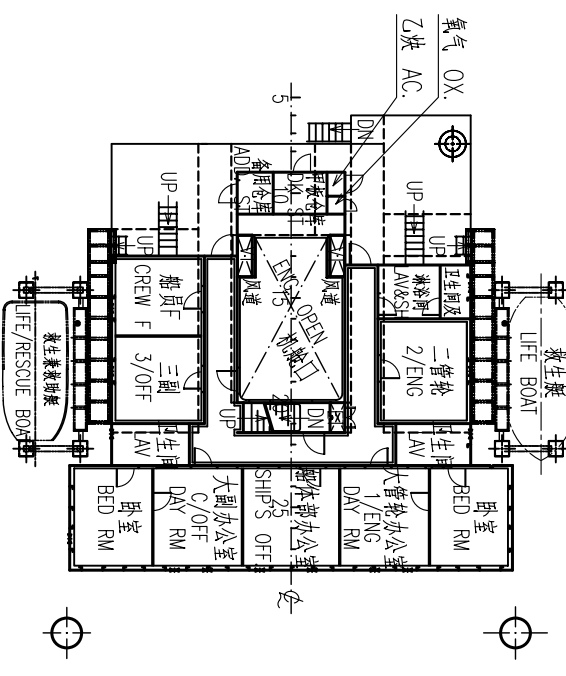
驾驶室甲板
NAV. BRI. DECK



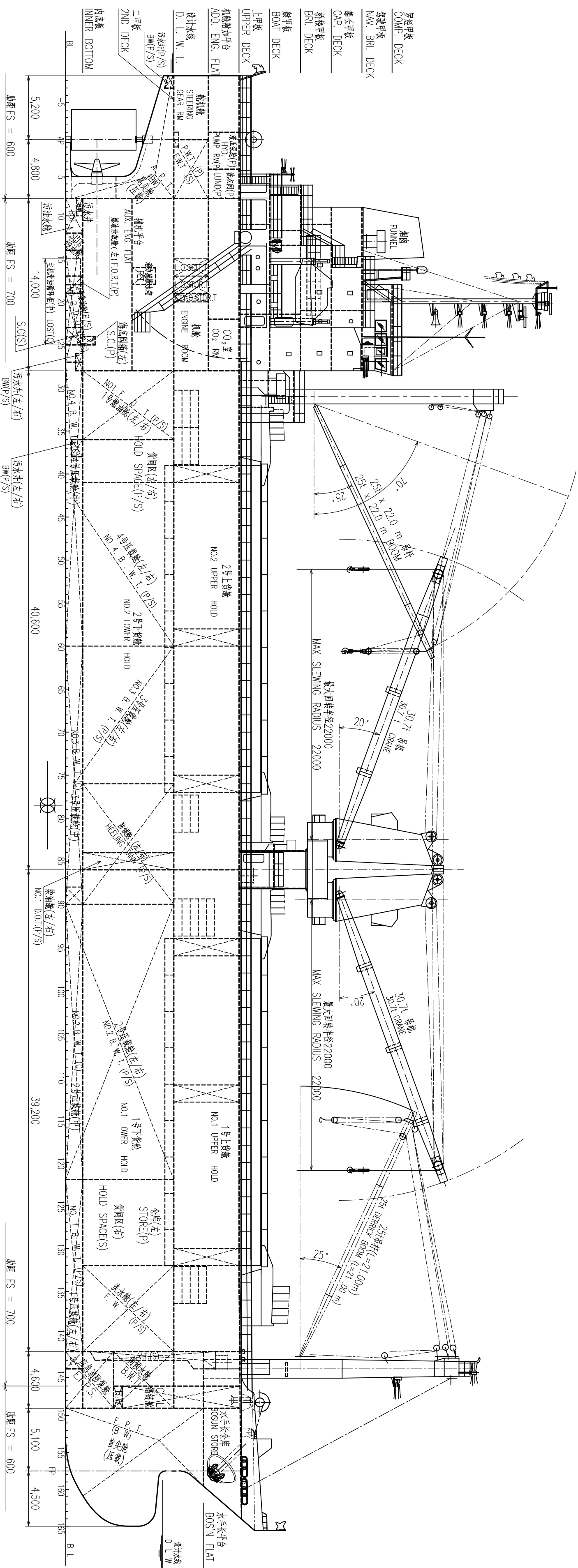
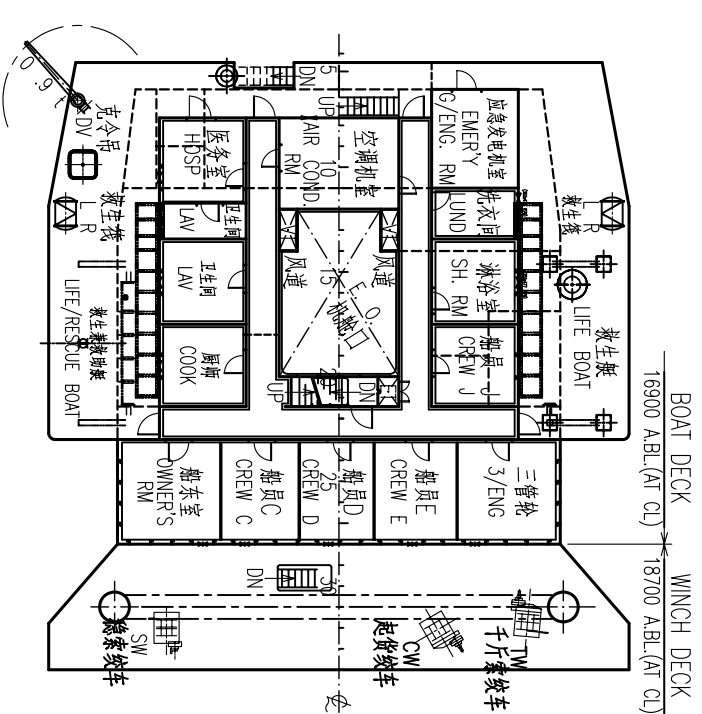
船长甲板
CAP. DECK



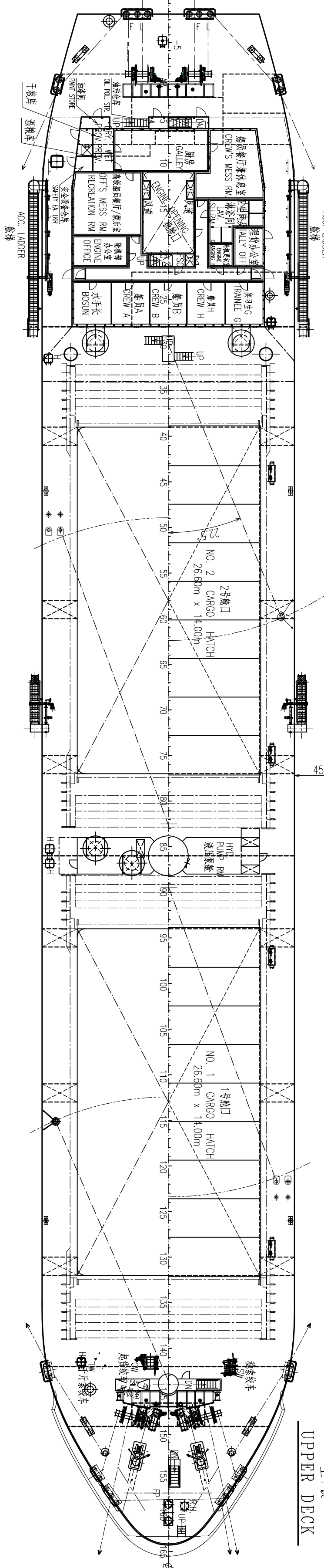
桥楼甲板
BRI. DECK



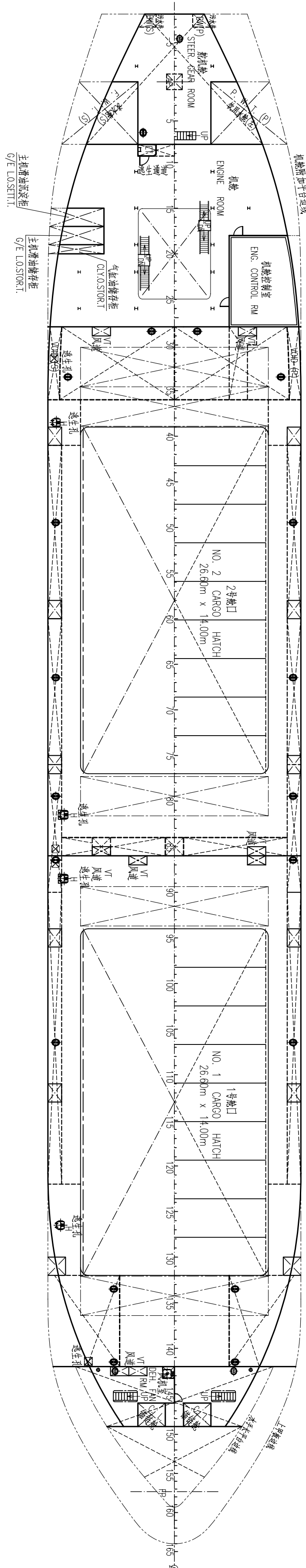
艇甲板
BOAT DECK



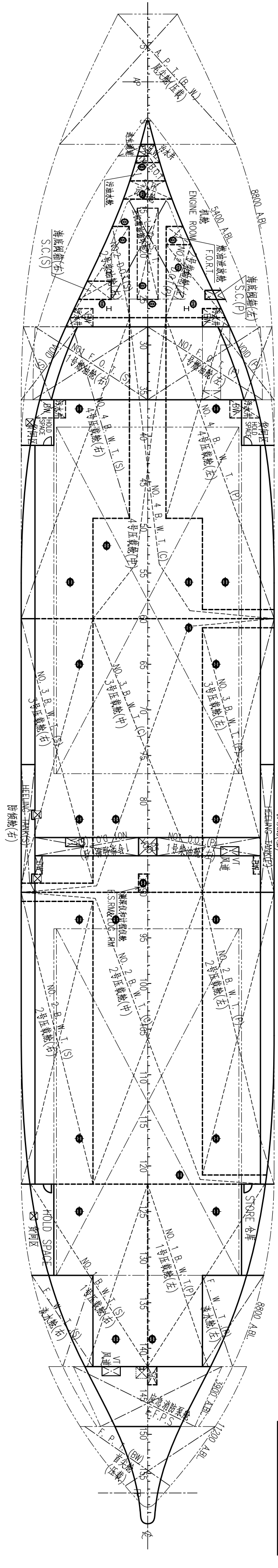
上甲板
UPPER DECK



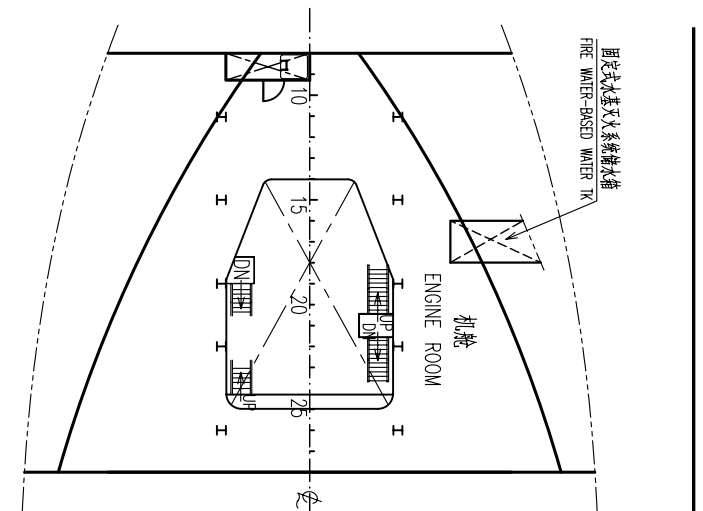
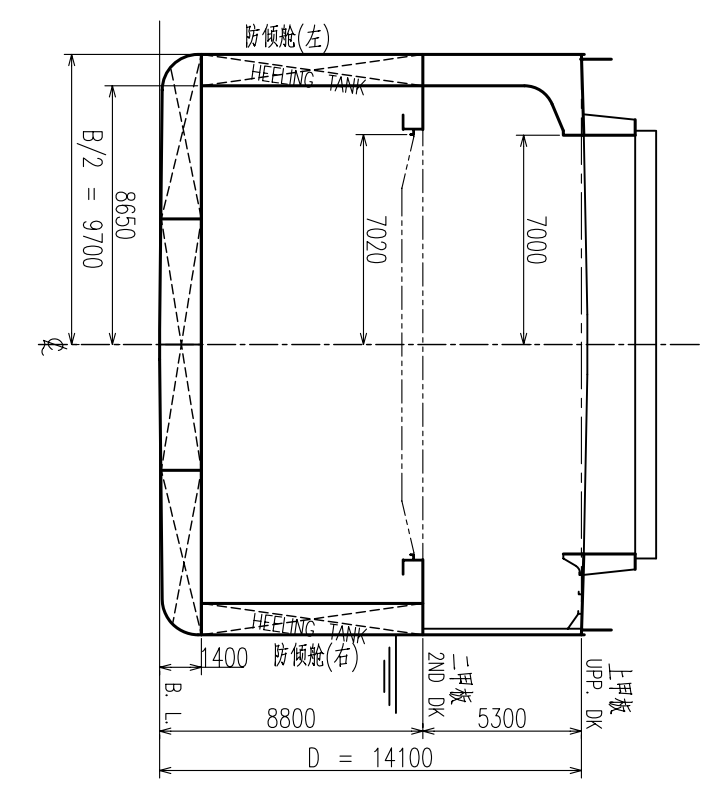
二甲板
2ND DECK



底板
BOTTOM PLAN

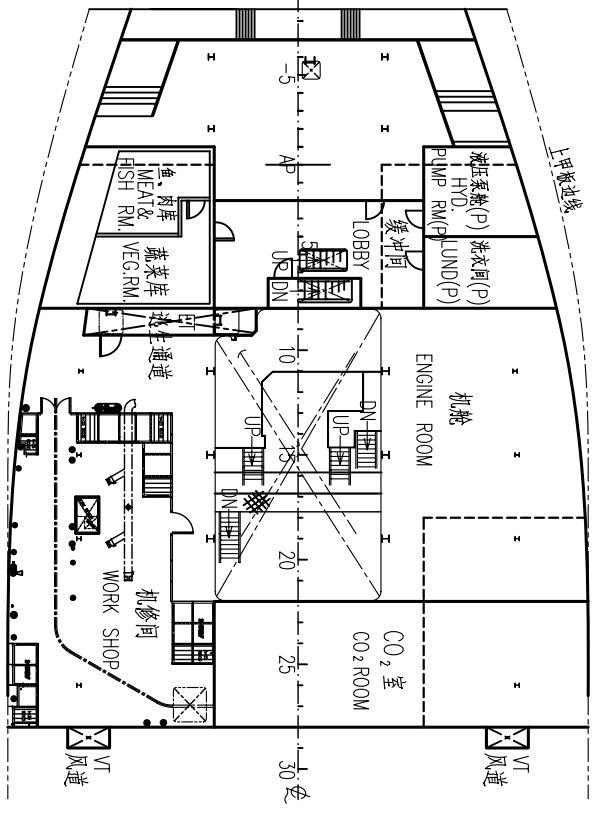
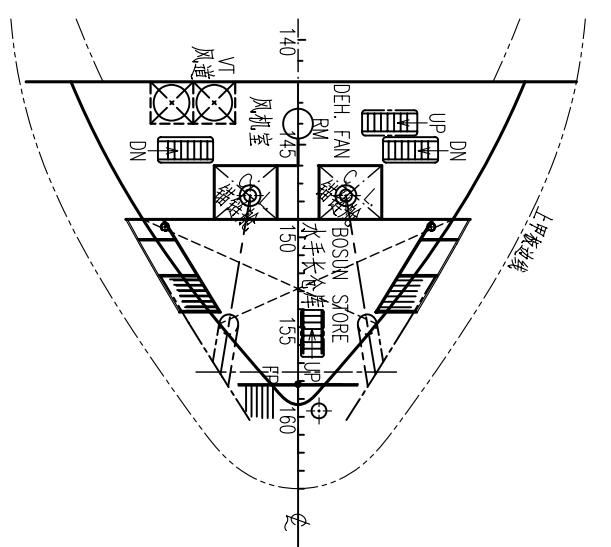


附件和技术文件履历					PLAN HISTORY				
日期	版本	描述	修改通知单	说明	设计	审核	批准	日期	说明
DATE	REV	MARK	QTY	REVISION NO	DESIGN	REVIEW	APPROV	DATE	DESCRIPTION
20091022	A				设计	审核	批准		设计
					设计	审核	批准		设计



水平甲板
BOSN FLAT

辅助甲板
ADD. ENGINE FLAT



2号开孔平台
NO.2 PLATFORM (3900)

主尺度
PRINCIPAL PARTICULARS

总长 LENGTH (O. A.)	118.35 m
垂线间长 LENGTH (B. P.)	108.30 m
型宽 BREADTH (M.D.)	19.40 m
型深 DEPTH (M.D.)	14.10/8.80 m
设计吃水 DESIGNED DRAFT (M.D.)	ABT. 7.90 m
结构吃水 SCANTLING DRAFT (M.D.)	9.20 m
载重吨(按设计吃水) DEAD WEIGHT (AT DESIGNED DRAFT)	ABT. 9,600 t
载重吨(按结构吃水) DEAD WEIGHT (AT SCANTLING DRAFT)	ABT. 12,000 t
总吨 GROSS TONNAGE	ABT. 8,600 t
主辅机 MAIN ENGINE	取洋 LH461A x 1 套
最大功率 MAXIMUM CONTINUOUS RATING (MCR)	3,309 kW x 220 rpm-1
常速功率 CONTINUOUS SERVICE RATING (CSR)	2,813 kW x 208 rpm-1
定员 COMPLEMENT	20 P
航区 NAVIGATION AREA	无限航区 OCEAN GOING
船级 CLASSIFICATION	★CSA, General dry Cargo Ship ★CSM, Loading Computer (S)

比例
1:250

工程号 NO.	0
船名	12,000DWT 杂货船
船级社 CLASS	12,000DWT GENERAL CARGO VESSEL
项目 ITEM	签字 SIGN. 日期 DATE
设计 DESIGN	20091021
校对 CHECK	20091022
审核 REVIEW	20091022
标准 STANDARD	20091023
审定 APPROV	20091023

工程号 NO.	0	12,000DWT 杂货船	详细设计	DETAIL DESIGN
船名	12,000DWT 杂货船	12,000DWT GENERAL CARGO VESSEL	总布置图	GENERAL ARRANGEMENT
船级社 CLASS	12,000DWT 杂货船	12,000DWT GENERAL CARGO VESSEL	共 1 页	第 1 页
项目 ITEM	签字 SIGN. 日期 DATE		比例	1:250
设计 DESIGN	20091021		共 1 页	第 1 页
校对 CHECK	20091022			
审核 REVIEW	20091022			
标准 STANDARD	20091023			
审定 APPROV	20091023			