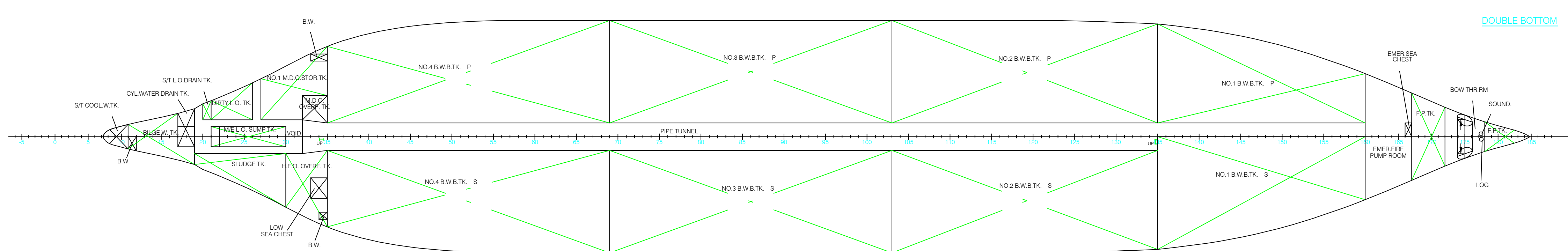
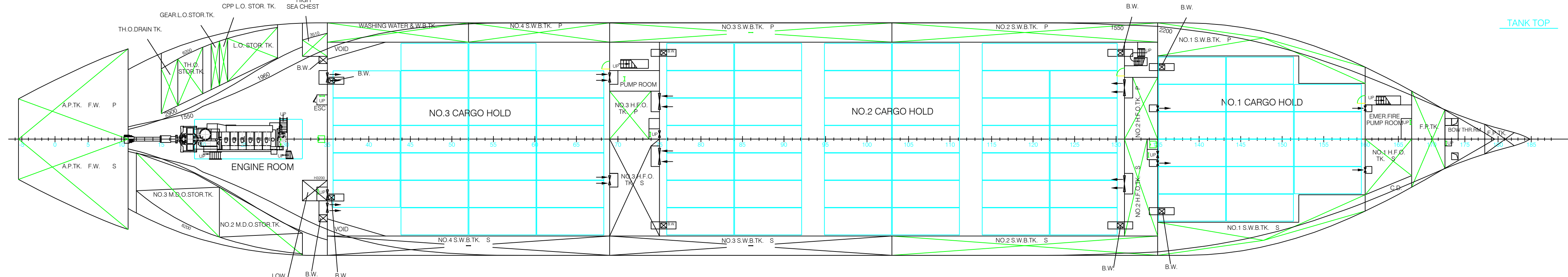
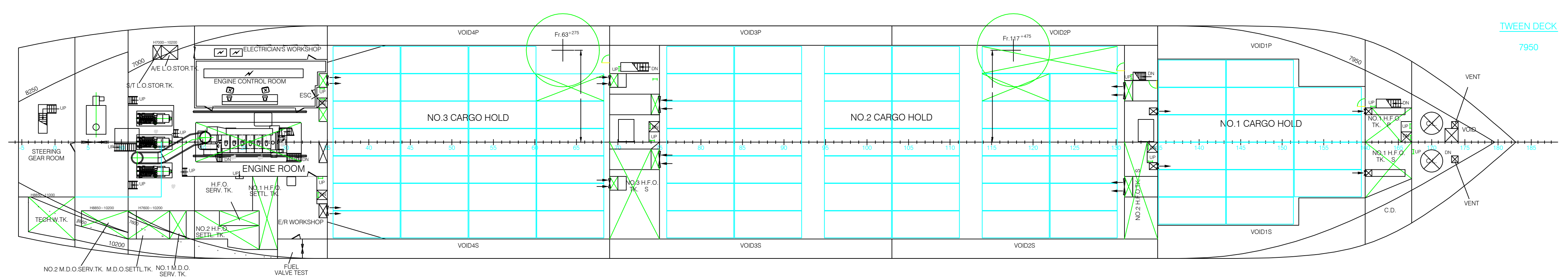
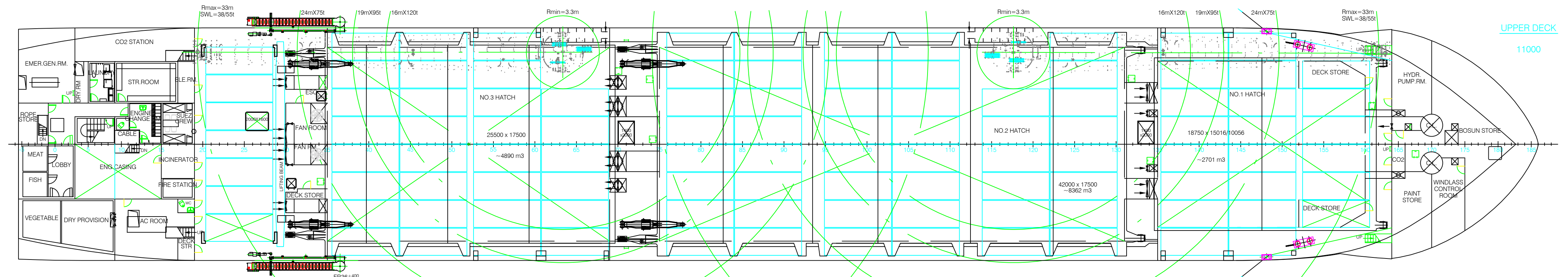
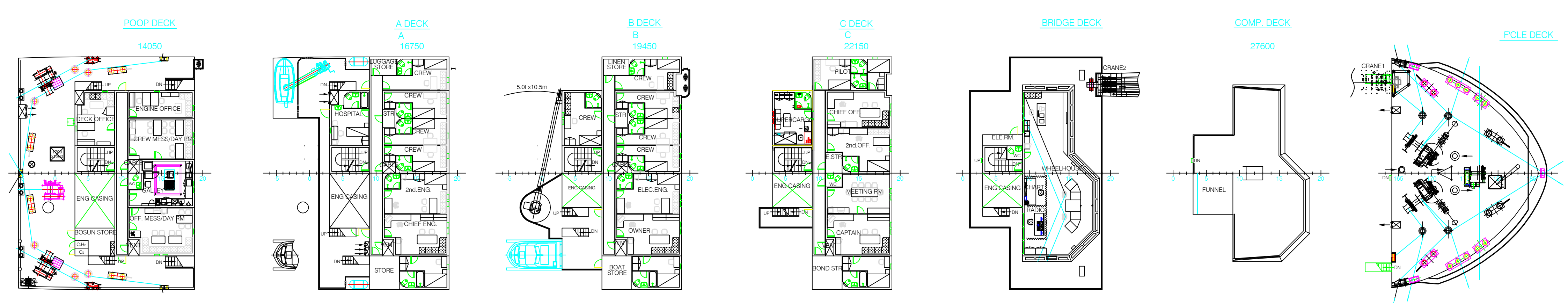
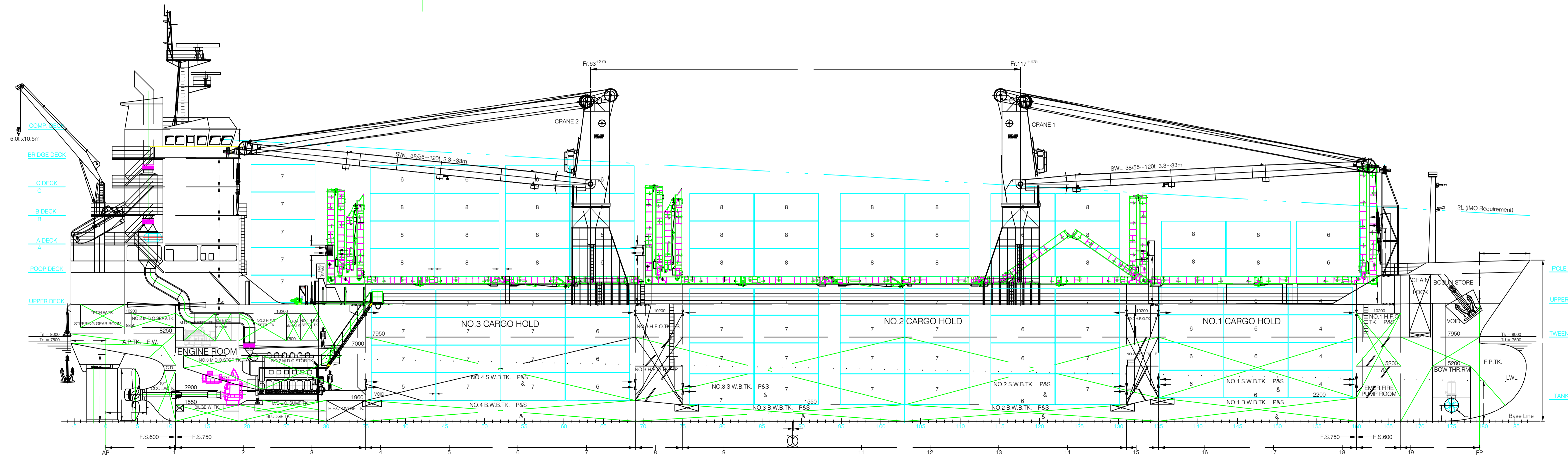
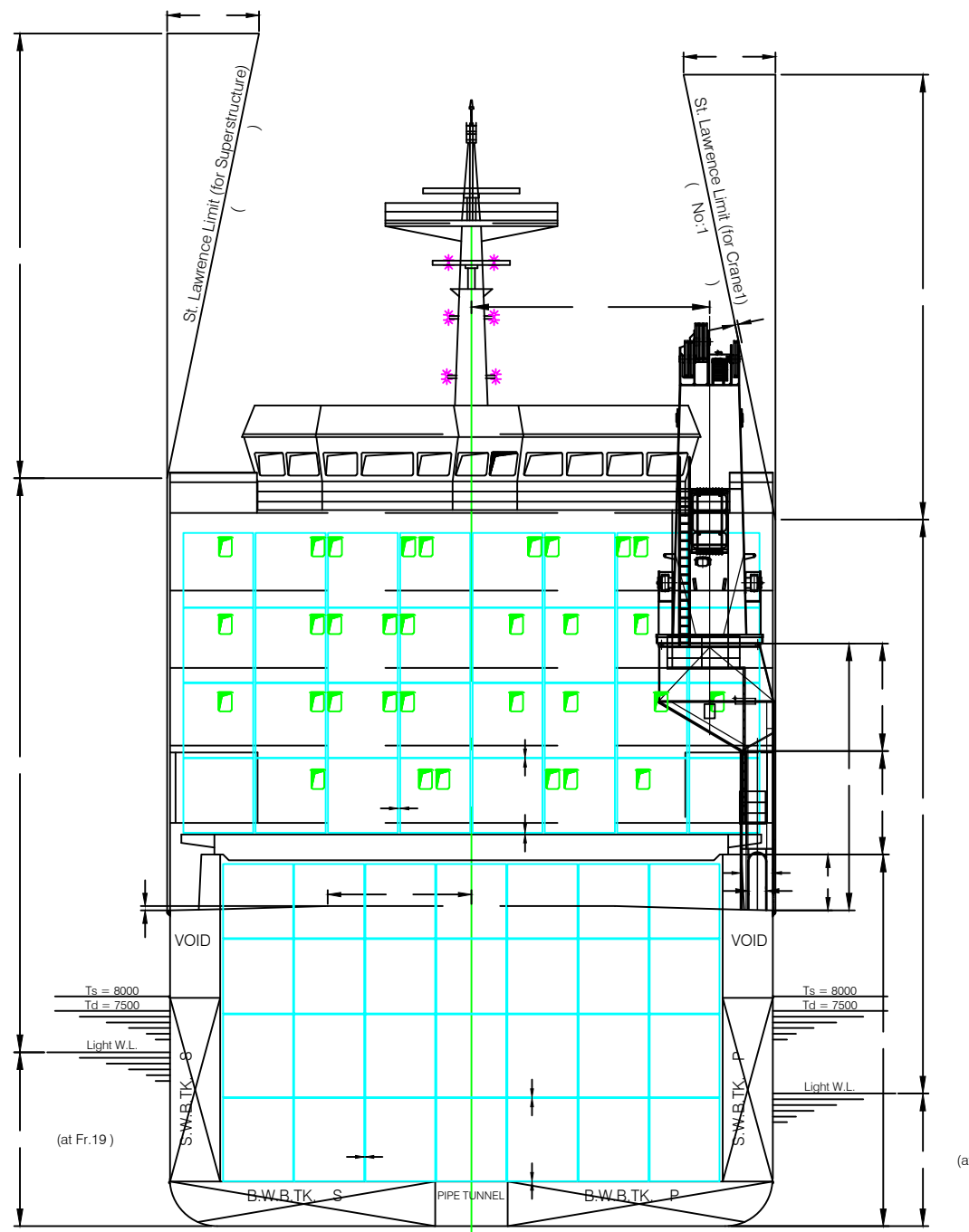


PRINCIPAL PARTICULARS

LENGTH O.A.	138.07 m	MAIN ENGINE	MAK 6M43 1 Set
LENGTH B.P.	130.00 m	MCR	5400kW x 500r/min
BREADTH MLD.	21.00 m	SERVICE SPEED ( 90%MCR with 10% Sea Margin at Designed Draft ) ( 10% )	15.0 kn
DEPTH MLD.	11.00 m	CRUISING RANGE	~11000 n.miles
DESIGNED DRAFT	7.50 m	COMPLEMENT	20 P
SCANTLING DRAFT	8.00 m	CLASSIFICATION	GL 100 A5, MULTI-PURPOSE DRY CARGO SHIP, E3, G, IW, BWM - F, STRENGTHENED FOR HEAVY CARGO, EQUIPPED FOR CARRIAGE OF CONTAINERS, SOLAS II-2, REG 19, MC E3 AUT
DEADWEIGHT AT DESIGNED DRAFT	~11526 t		
SCANTLING DRAFT	~12782 t		
CARGO HOLD CAPACITY	15953 m3		
CONTAINER CAPACITY:			
ON DECK	331 TEU		
IN HOLD	334 TEU		
TOTAL	665 TEU		



NO.1	NO.2	NO.3	NO.4
NO.1	NO.2	NO.3	NO.4
NO.1	NO.2	NO.3	NO.4