

REV 版本号	DATE 日期	DESCRIPTION 描述	DESIGNED 设计	CHECKED 校对	VERIFIED 审核	APPROVED 审定
	2018.04	CONTRACT DESIGN 方案设计				

27	25	23
5	5	5

21	19	17	15
5	5	5	5

13	11	09	07
5	5	5	5

05	03	01
5	5	5

ON DECK BAY NO. (20' CONT.)	
TEU, total	70

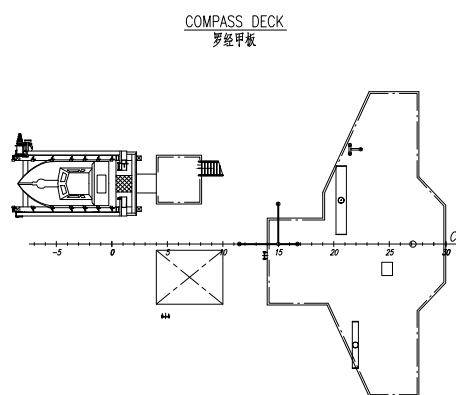
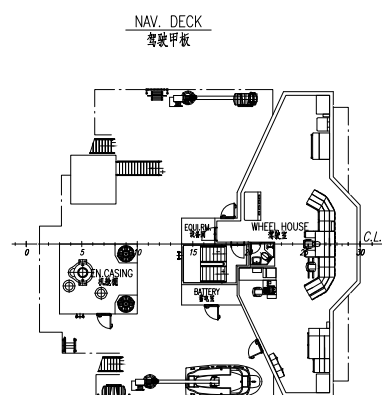
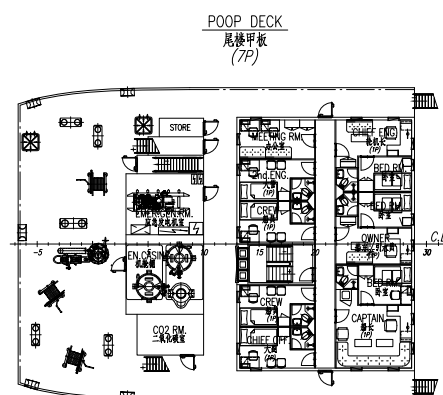
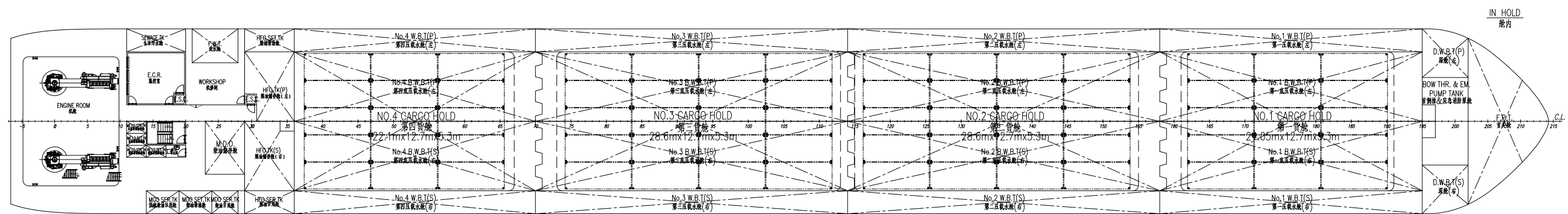
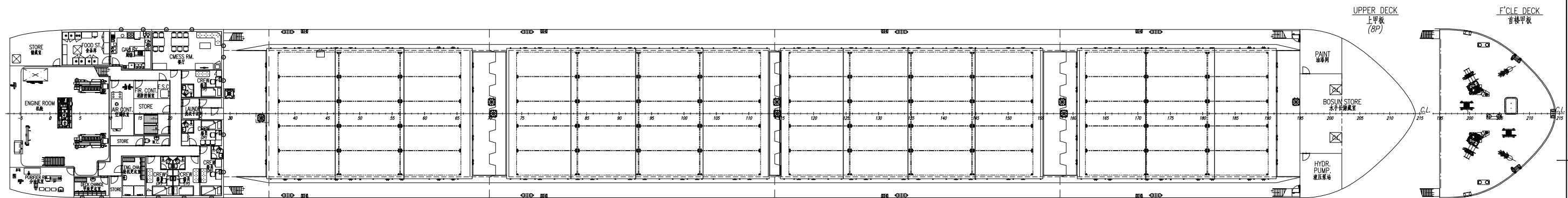
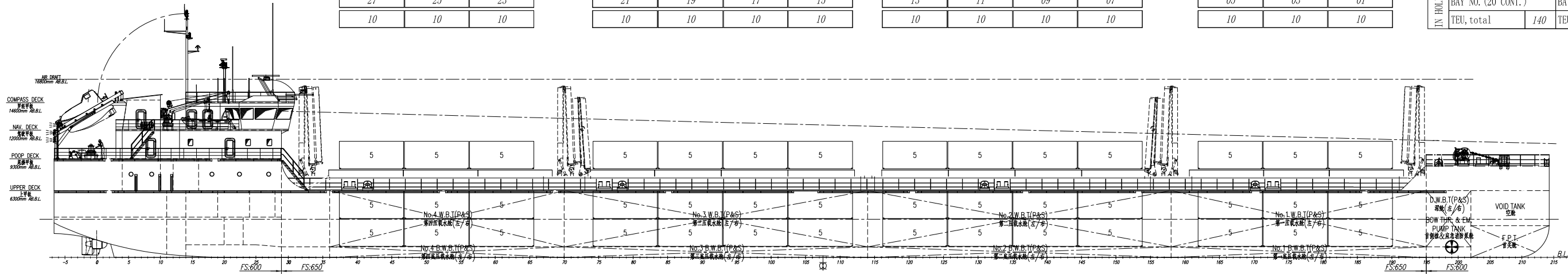
27	25	23
10	10	10

21	19	17	15
10	10	10	10

13	11	09	07
10	10	10	10

05	03	01
10	10	10

IN HOLD BAY NO. (20' CONT.)		BAY NO. (20' CONT.)	
TEU, total	140	TEU, total	210



主要参数
PRINCIPAL PARTICULARS

总长 LENGTH O.A.	140.90 m
垂线间长 LENGTH B.P.	136.87 m
型宽 BREADTH (MLD.)	16.90 m
型深 DEPTH (MLD.)	6.30 m
设计吃水 DESIGNED DRAFT (MLD.)	3.60 m
载重量 DEADWEIGHT AT SEA	~5,200 t
服务航速 DEADWEIGHT AT RIVER	~5,330 t
服务航速 SPEED(d=3.60m, MCR)	~10.8 knt
续航力 ENDURANCE	~4,000 n mile
船员 COMPLEMENT	14P+(1 PILOT)

装箱数 DECK	70 TEU
HOLD	140 TEU
TOTAL	210 TEU
主机 MAIN ENGINE	2 SETS
Wartsila 6L20	1,200kW x 1000rpm
MCR	1,200kW x 1000rpm
船级符号 CLASS NOTATION	KM Ⓢ ICE R2-RSN(4,5) -AUI-ICE1

OA			
B			V
DF			2
			TEU