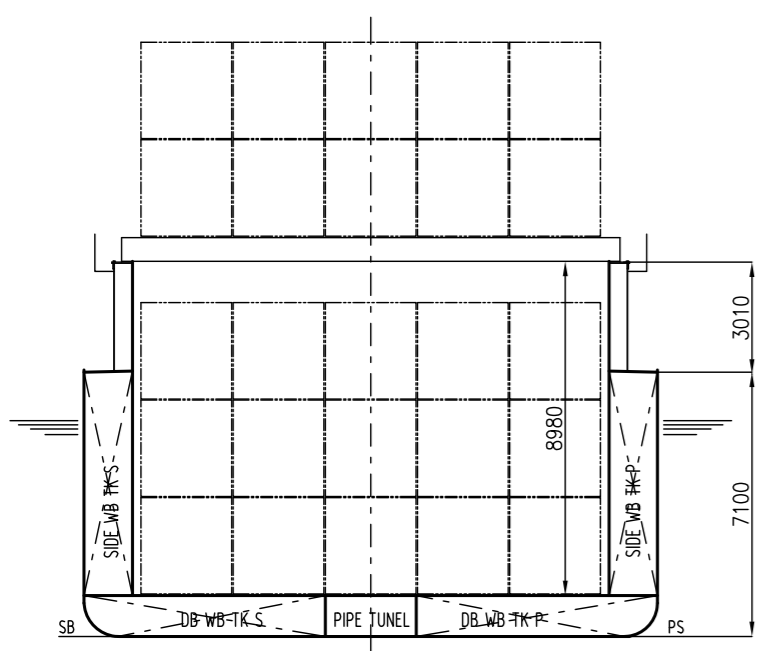
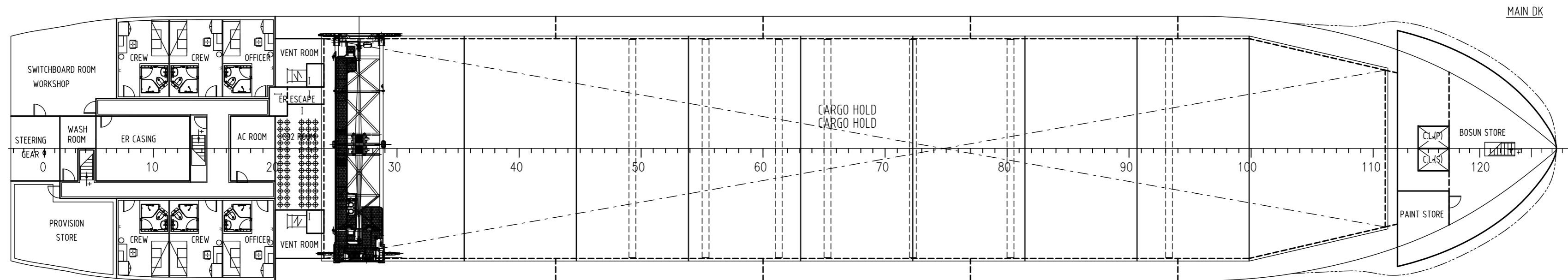
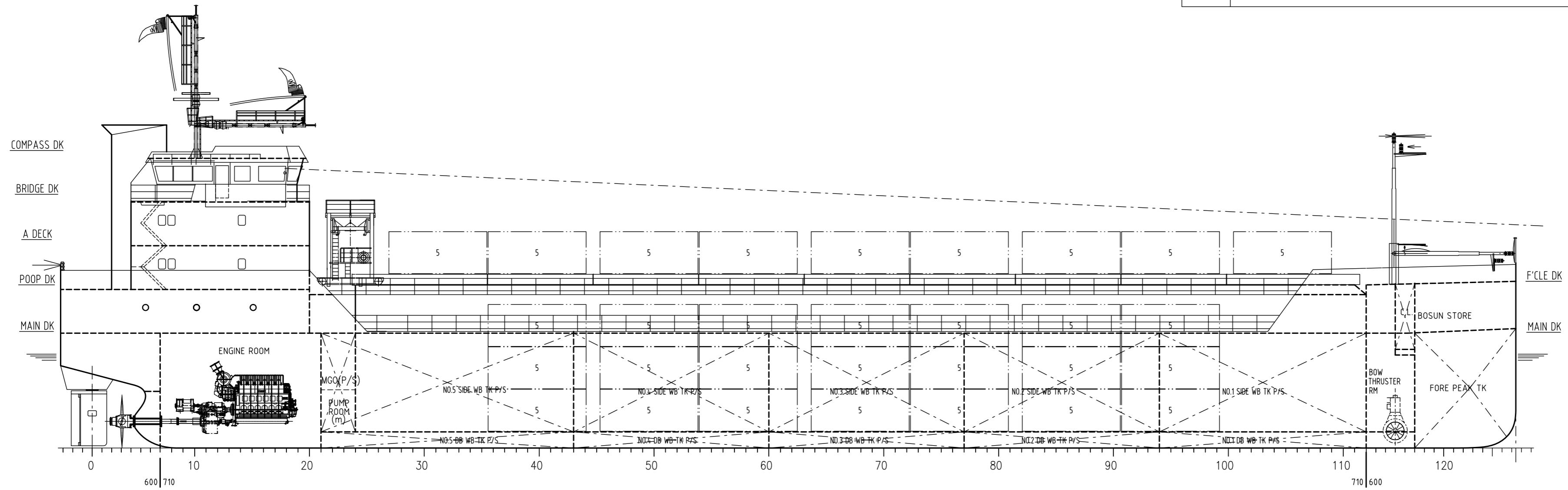


版本号 Rev.	描述 Description	修改 Drawn	校对 Checked	日期 Date



PRINCIPAL PARTICULARS

LENGTH (O.A.)	abt. 89.95 m
LENGTH (B.P.)	88.00 m
BREADTH (MLD)	15.40 m
DEPTH (MLD)	7.10 m
DESIGN DRAFT	5.80 m
DEADWEIGHT	abt. 5,000 t
CAPACITY OF CARGO HOLD	abt. 7,000 m ³
CONTAINER CAPACITY IN HOLD	45 TEU
	ON DECK
	TOTAL
	105 TEU
	150 TEU

MAIN ENGINE	MAK 6M25E, Tier II with LPSCR
	MCR: 2,100kW X 720r/min
SERVICE SPEED	abt. 12.0 kn
COMPLEMENT	9 Persons
CLASSIFICATION	DNVGL ✖ 1A, GENARAL DRY CARGO SHIP, Strengthened (IB), Ice (1A), BIS, E0, TMON, BWM (T)
	Or equivalent Class notation
GROSS TONNAGE	~3,200

PROPOSAL DESIGN 方案设计		5000DWT GENERAL CARGO VESSEL 5000DWT杂货船		SC2018-B4088-03	
CURRENT REVISION 当前版本	A	CURRENT STATUS 当前状态	S	HULL NO.:	
DESIGNED 设计	马洪程	DATE 日期		WEIGHT 重量	
CHECKED 校对		DATE 日期		kg	SCALE 比例
VERIFIED 审核		DATE 日期		1/1	1:200
APPROVED 批准	徐宜兵	DATE 日期	2018.09.18	TOT. AREA 总面积	0.25 m ²
				SHANGHAI MERCHANT SHIP DESIGN & RESEARCH INSTITUTE 上海船舶研究设计院	

This drawing and the information contained is the exclusive property of SDARI and must not be copied or handed over to third parties without our written permission.
本图(文件)及所含内容的知识产权属于上海船舶研究设计院(SDARI)。未经本院书面许可,任何人不得复制或转交第三方。

会签
船装
顾剑刚
结构
顾斌斌
轮机
马勇
电气
董浩强

旧底图登记号
底图登记号